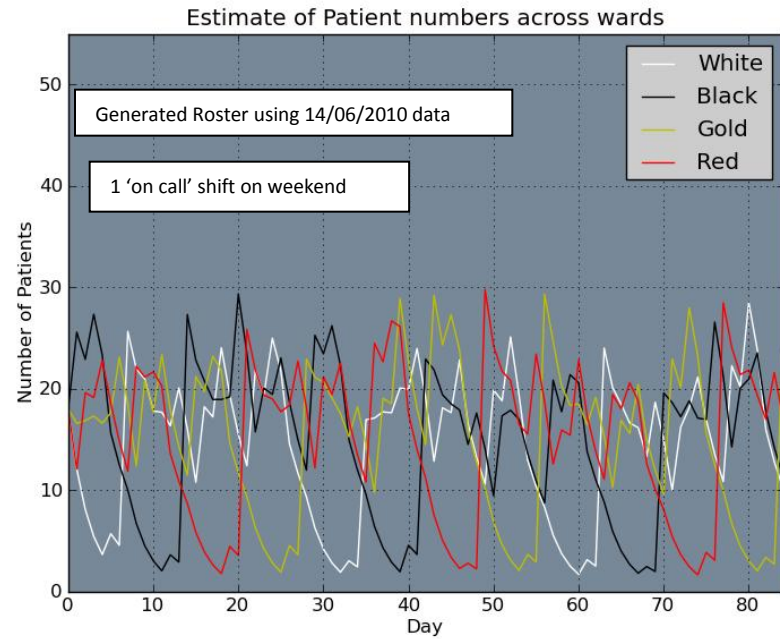
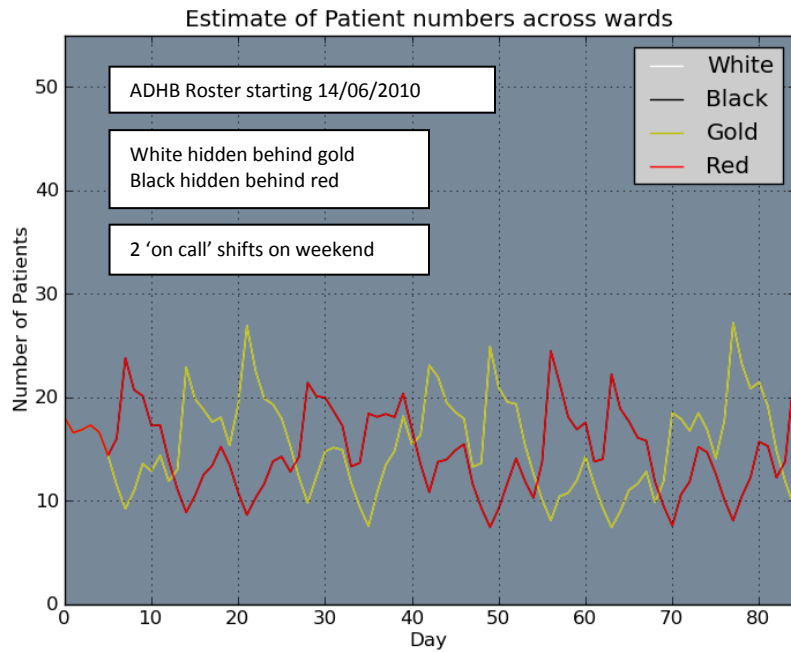
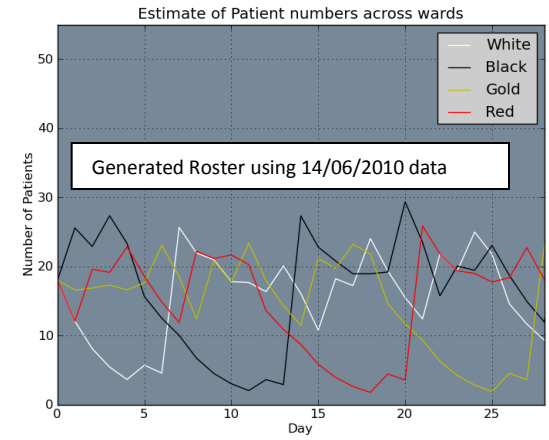
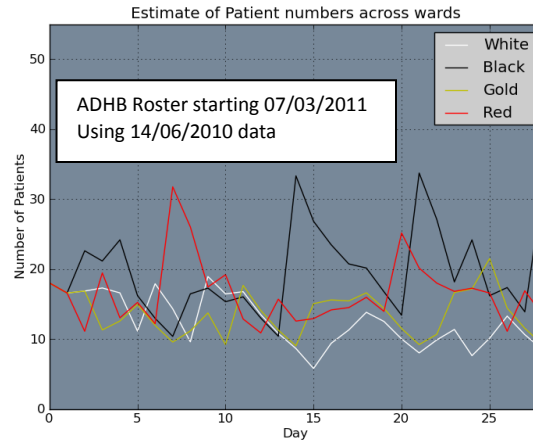
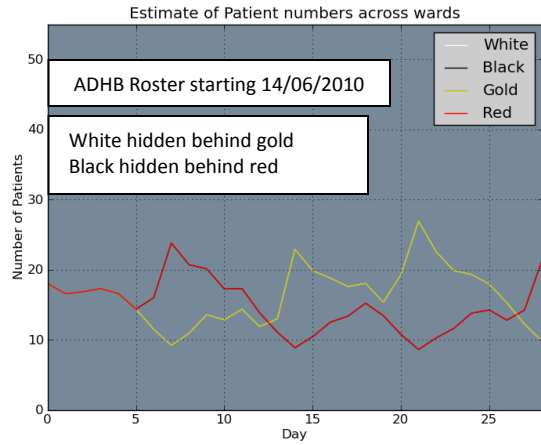
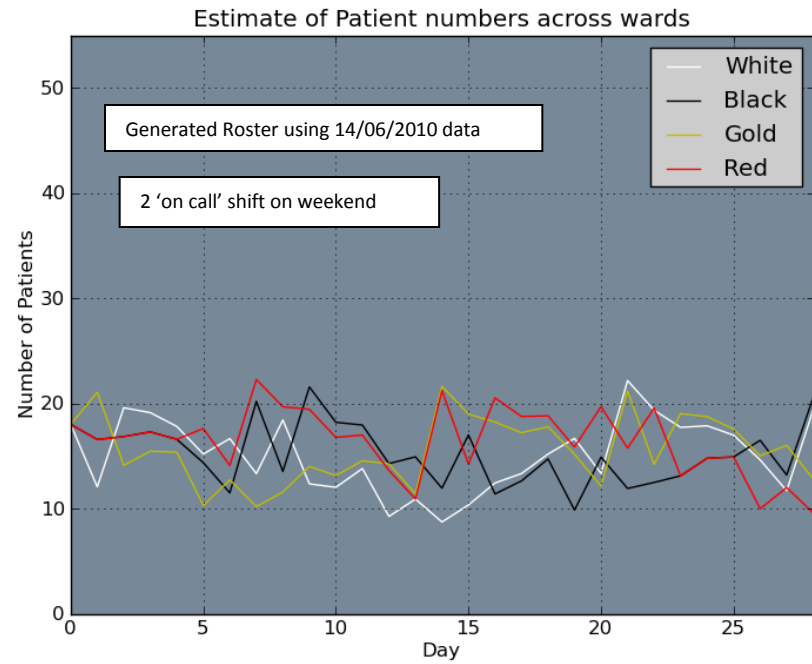
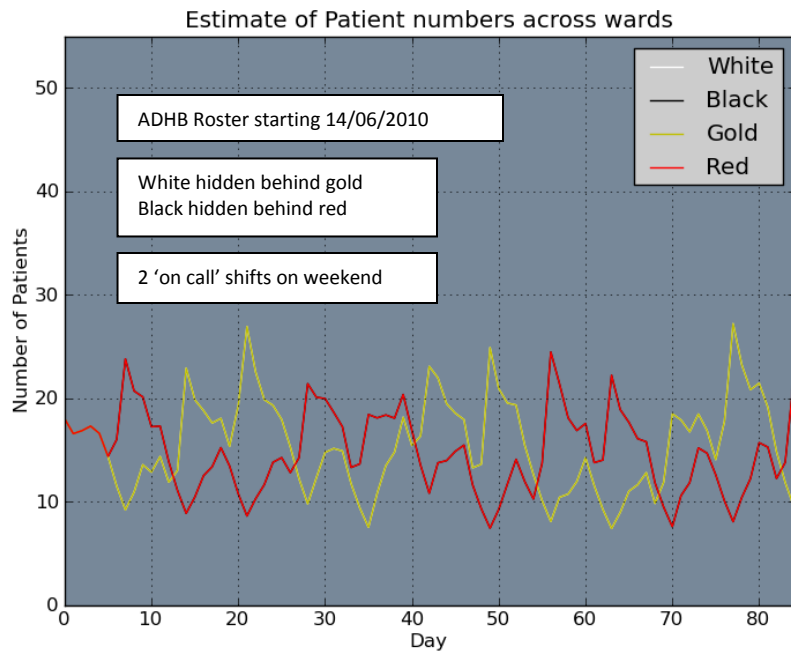


Predicted patient numbers using Historical Data



Predicted patient numbers using Historical Data



Assumptions:

- Used historical data starting from 14/06/2010 was used as the number of patients admitted per day
- Admissions split evenly across all 'on call' wards
- 1/3 of patients in each ward discharged on week days and 1/5 on weekends
- 18 patients in each ward to start with